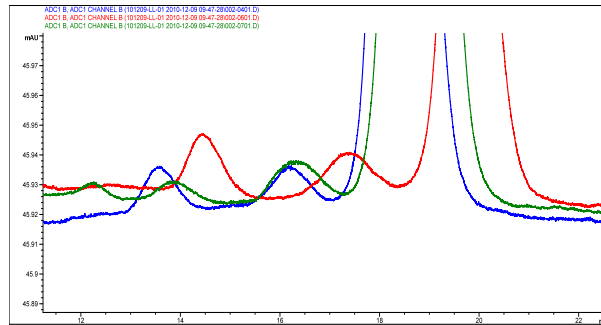


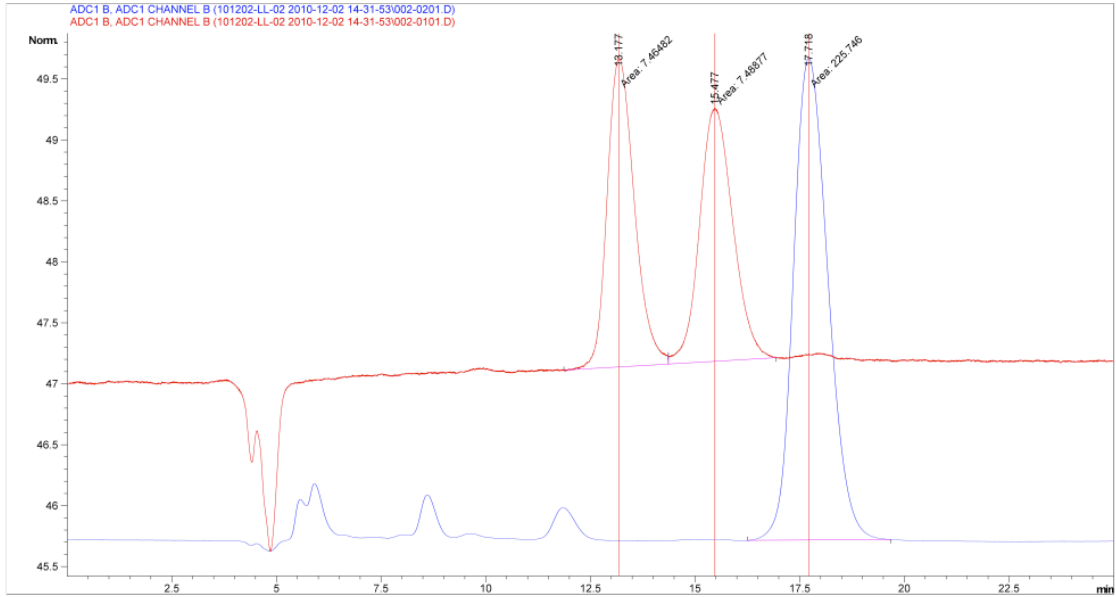
Chromatograms for vials 29, 40, 42 (the 2 peaks may be the products)



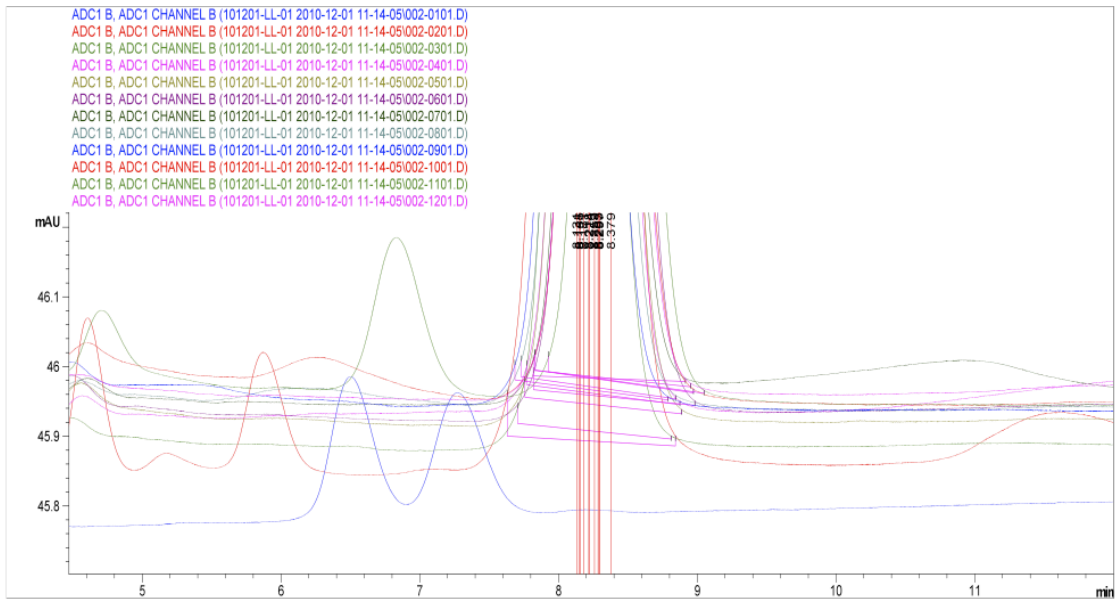
List of the 48 ligands (A1 is #1, B1 is #2, and so on...)

	1	2	3	4	5	6
A						
	Binap	Catasium Ph	DIOP	SkewPhos	CarboPhos	JosiPhos 418-1
B						
	Tol-Binap	MOP	BICP	SDP	f-AP	JosiPhos 212-1
C						
	C2-TunePhos	BinaPhos	MeBICP (3,5-Me)	Xyl-SDP	DiPamp	QuinaPhos
D						
	C4-TunePhos	Me-DuPhos	TangPhos	PhanePhos	f-Binaphane	JosiPhos 8-1
E						
	DM-SegPhos	Et-DuPhos	DuanPhos	CTH-PhanePhos	FerriPhos NMe2	MandyPhos 1-1
F						
	Kelliphite	Me-BPE	Binapine	Catasium D(R)	TaniaPhos 1	WalPhos 1
G						
	BiPheP	QuinoxP*	ProPhos	Kanata DACH	TaniaPhos 2	WalPhos 3
H						
	Binaphane	NorPhos	ChiraPhos	Catasium T2	JosiPhos 2-1	WalPhos 8

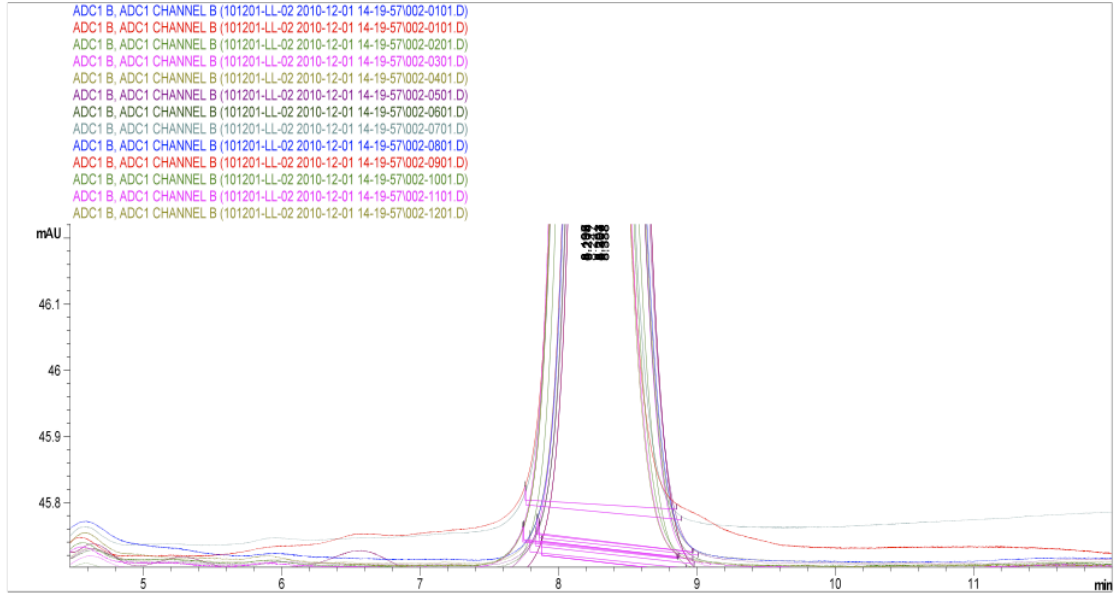
Reference: enamide and rac-PZQ



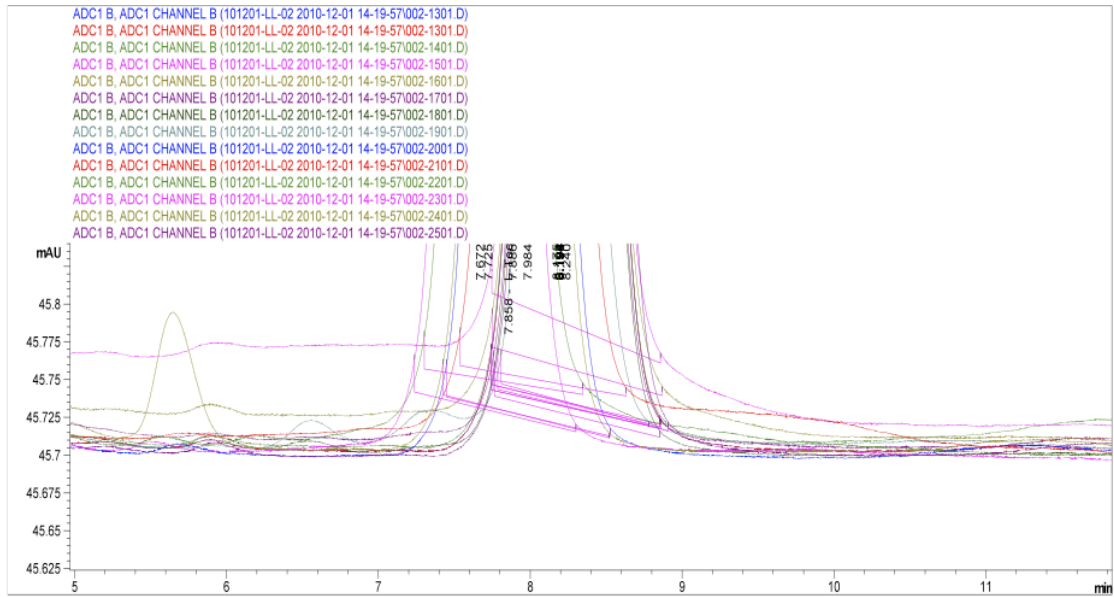
Chromatograms obtained for sample 1-10 (superimposed with rac-PZQ and starting mat.)



Chromatograms obtained for sample 11-23



Chromatograms obtained for sample 24-36



Chromatograms obtained for sample 37-46 (47 and 48 also show no product).

